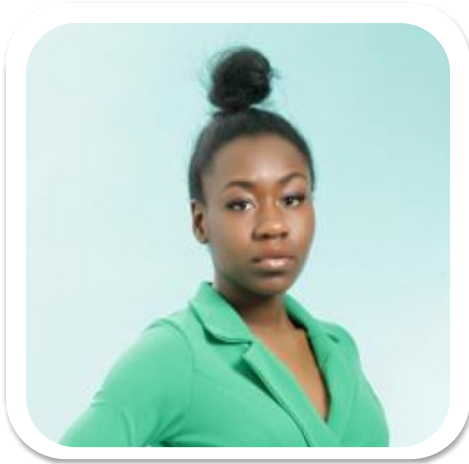


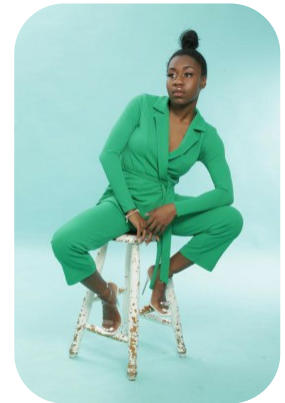
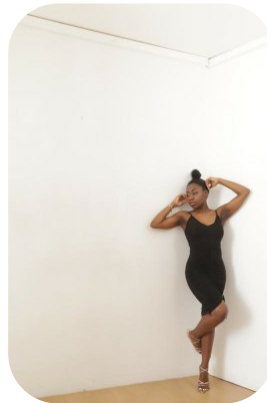
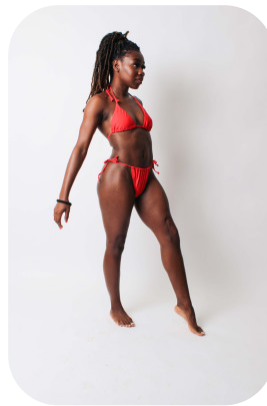
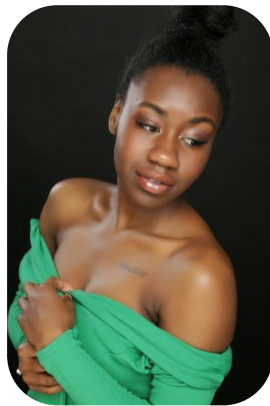


# Naomi May Watson



Age: 21-24	Height: 5ft3inch	Eye Colour: Black	Accent: London
Gender:F	Weight: 54kg	Waist: 25	Bust: 34
Location: London	Shoe Size: 5	Hips: 36	
Drives: No	Hair Color: Black		

**Talents**  
 COMMERCIAL MODELS, COMMERCIAL DANCERS,  
 YOUNG PERFORMERS, EXTRAS



Additional Talents:

BIKE - SWIM - ROLLERSKATE - ICESKATE - HORSERIDE - CLIMB

DANCE - LYRIC THEATRE - CONTEMPORARY DANCE - 7 YEARS

ACTING - ANNA SHER - EXTRAS (EASTENDERS, HOLLYOAKS, SKINS, MISFITS)

---

FOR ANY INQUIRIES PLEASE CONTACT US

0207 834 66 60 - Office

[www.fusionmng.com](http://www.fusionmng.com)

[cast@fusionmng.com](mailto:cast@fusionmng.com)

**FM** FUSION  
MANAGEMENT  
TALENT & MODEL MANAGEMENT AGENCY